
Installation manual Trichogramma Pack T10



EN



SKYINNOV

SUMMARY :

1. Introduction _____ p3

2. Assembly _____ p4

3. Setup _____ p8

Introduction :

The trichogramma pack for DJI Agras T10 is composed of the following elements:

- The Trichogramma system T-Drop
- The T-Box System
- The supports of fixations necessary for its installation

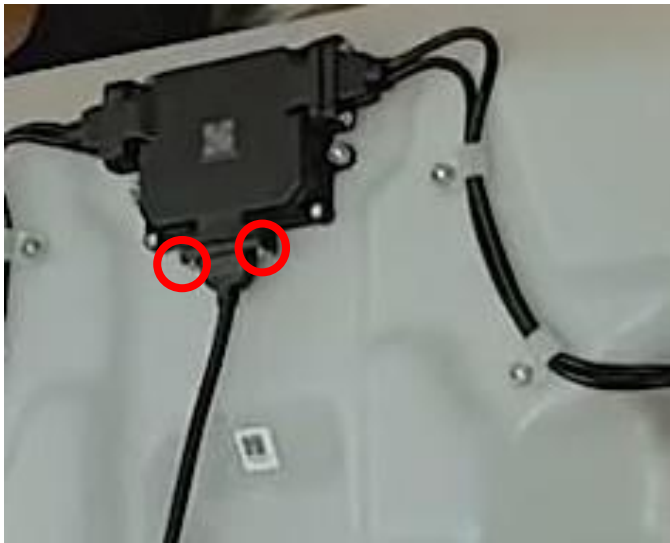
**This manual is intended for the assembly of the pack,
For the use of the spreader and the autonomous system please refer to their manual:**

[-T-Drop Manual](#)

[-T-Box Manual](#)

Assembly :

1) Removing the T10 seeding system:



**Remove the two cable screws from the seeding mechanism, remove the cable and replace it with the plug supplied.
Remove the seeding system from the tank.**

2) Preparing the tank:



Use the 2 M3x15 CHC screws supplied to mount the bracket under the T-Box (under the battery and antenna).

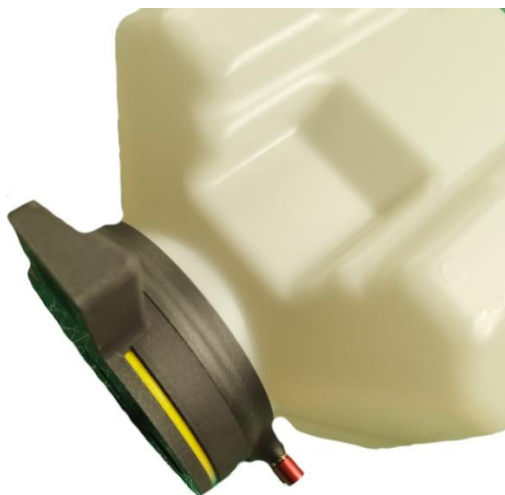
Place the assembly on the tank and mark the location for the two holes (M12 socket side).

3) Attaching the T-Box to the tank:



**Drill 3.5 mm holes in the tank in the positions marked out above.
Remove the double-sided protection and then fix the T-Box to the tank
using 2 M3x15 CHC screws and 2 M3 nuts supplied.
Apply strong pressure to the double-sided tape to ensure it sticks firmly.**

4) Assembling the spreader on the tank:



Loosen the hand screw, place the spreader under the tank, turn a quarter turn and then tighten the hand screw to lock the spreader under the tank.

Run the spreader cable along the side of the tank (battery side) then connect the plug to the T-Box.

Setup :

To work with the T-Box, your T-Drop spreader must follow this configuration:

ARM : off

DROP mode : I/O

**This manual is intended for the assembly of the pack,
For the use of the spreader and the autonomous system please refer to
their manual:**

[-T-Drop Manual](#)

[-T-Box Manual](#)